



**Send Relief**  
Boston







## Contact Information

John Ames

Boston Ministry Center Director

[SendMe@sendrelief.org](mailto:SendMe@sendrelief.org)











## Meeting Needs, Changing Lives

Send Relief works with churches and volunteers to meet needs and change lives in communities within the U.S. and around the world.

By offering help and hope to the most vulnerable in collaboration with missionaries, local ministries and churches, your gifts and efforts through Send Relief have a long-term impact.

With Send Relief's help, churches and partners like you receive resources and training to be the hands and feet of Jesus to communities in crisis, refugees, human trafficking survivors, those affected by natural disasters and vulnerable children and families.



## Ministry Centers

Send Relief ministry centers deliver compassion ministry within local communities while providing mission trips and training opportunities for churches all over the country. The goal of ministry centers is twofold: serve communities well and encourage others to do the same.

All over North America, Send Relief ministry centers actively assess community needs, develop ministry strategies, deliver ministry and provide opportunities for others to go on mission.



# Community Snapshot

**With its rich history and legacy of arts and culture, Boston has a wealth of museums showcasing everything from history to fine arts.**

While often considered an academic center made up of exclusively intellectual elite, Boston is a mix of people from many backgrounds. According to 2018 U.S. Census data, Boston is now the **sixth most diverse city** in the nation.

There are many opportunities for churches and believers to reach people from all walks of life in Boston.

## Population:

- Boston's Diversity: **44.5%** White, non-Hispanic, **22.7%** Black/African American, **19.8%** Hispanic, **9.7%** Asian/Pacific Islander
- Language: **62.3%** speak only English at home, **37.7%** Speak another language at home and **17.4%** Speak English "less than very well"
- Native Statistics: **71.7%** native to the USA, **28.3%** foreign-born

- Poverty Statistics: **18.9%** below the poverty rate and **27.7%** of children are below the poverty rate
- The Boston Globe reported that from August to October, a wave of South American migrants forced organizations to make difficult choices about allocating limited resources.
- Governor Charlie Baker submitted a budget request for a \$139 million supplemental to fund immigrant and refugee assistance programs, including increasing housing resources.
- Top immigrant groups in Greater Boston include people from China, Dominican Republic, India, Haiti and Brazil.
- Skyrocketing housing costs within Boston have forced many residents, especially people of color and those with lower incomes, to struggle to find a place to live.



The scarcity of affordable housing is an essential catalyst for the latest demographic shifts within Greater Boston. While much of the increasing diversity in outlying cities and towns may be due to immigration from abroad, there is ample evidence that the limited availability of affordable housing in the urban core is also pushing all kinds of families away from neighborhoods where they otherwise may prefer to live.



# Boston Ministry Center Snapshot

## Ministries

### Strengthen Communities

Friendship Initiative

### Care for Refugees

Geneva Initiative

### Fight Human Trafficking

Beloved Initiative





# Boston Ministry Center Partnerships

The Send Relief's Boston Ministry Center has a vision to serve as a catalytic hub for ministry that strengthens communities throughout the 23 neighborhoods of Boston and beyond through the following three steps:

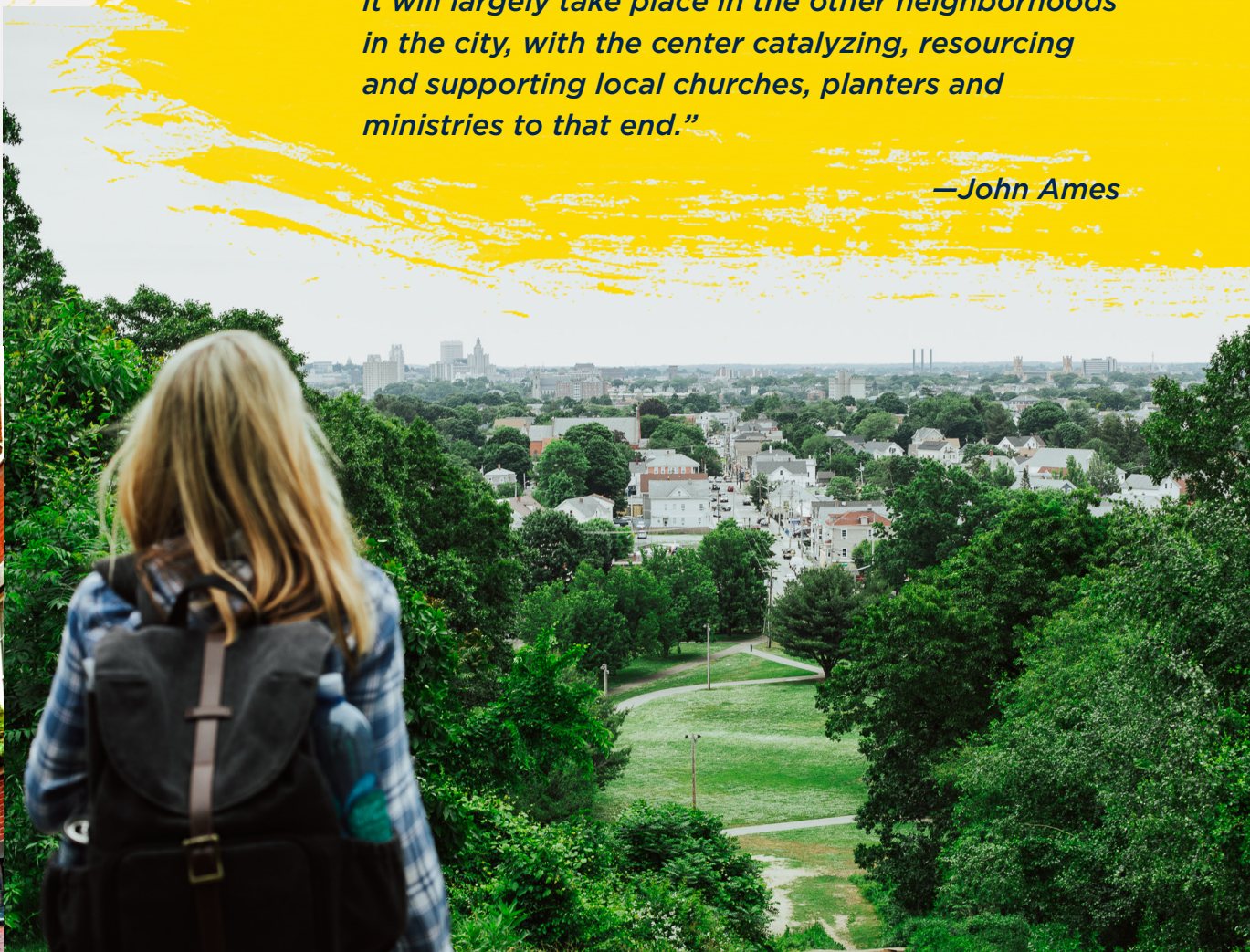
**Resource** local churches and local ministries

**Renew** local ministry workers and their families

**Restore** communities through serving in more significant city initiatives

*“There is a tremendous opportunity to serve as a catalytic hub for ministry rather than a walk-in ministry center. A lot of opportunity exists for more traditional compassion ministry in Boston. However, it will largely take place in the other neighborhoods in the city, with the center catalyzing, resourcing and supporting local churches, planters and ministries to that end.”*

*—John Ames*





# History of the Boston Ministry Center

Send Relief Boston Ministry Center began as a dream but quickly became a reality by God's providence. After scouting out several locations and advocating for the placement of a ministry center in one of the great cities in the Northeast, Send Boston city missionary David Butler struck gold.

Over a year, David entered into a favorable conversation with Tremont Temple Baptist Church, a historic church in downtown Boston. By God's grace, Tremont Temple Baptist Church bought into the vision of Send Relief and extended the opportunity to lease the fifth floor of their space, along with some other shared access to the building, to create a brand-new ministry center.

With finalized details over the summer of 2021, a director and two missionaries were put in place to build and contextualize this new center.

"If this ministry center could serve to catalyze community strengthening ministry in needed, neighborhood-specific ways to the glory of God, I would be very excited. My dream is for this center to become a hub for ministry equipping, connecting and support. The ministry should happen through the local churches, planters and missionaries, and the ministry center should be a vehicle for empowerment." – John Ames





# Boston Ministry Center

## Resource

### Resource Local Churches and Local Ministries

**Partner Connections** — They have developed a pool of trusted ministry partners and organizations that they can access to connect to their churches as they have need.

**Expert Equipping** — Twice a year they provide a focused training event in the form of a one-day seminar that equips local churches to address a specific need in the community.

**Financial Assistance** — They provide micro-grants to those churches that get trained to meet needs, so that they can start a ministry of their own.

## Renew

### Renew Local Ministry Workers and Local Ministry Families

**Mental Health Support** — They provide free biblical counseling to pastors, ministry workers and their families through our onsite counseling center.

**Marriage Strengthening** — They provide date night opportunities for ministry couples where they provide childcare at the center and a gift card to be used for a night out.

**Family Refreshment** — They are working with Send Network to create different events that would bring pastors, ministry workers and their families together.

## Vision

They are committed to working alongside local ministries and the local church to see communities strengthened to the glory of God.



## Restore

Establish a consistent ministry at the center by way of three initiatives: The Friendship Initiative, The Beloved Initiative and the Geneva Initiative.

### Restore Local Areas of Need and Local Communities

#### *The Friendship Initiative (Homeless ministry outreach)*

The Friendship Initiative seeks to build friendships with our neighbors experiencing homelessness. It begins with sharing a meal, engaging in constructive conversations and transforming lives through fulfilling relationships.

#### *The Beloved Initiative (Trafficking ministry outreach)*

The Beloved Initiative is an effort to serve human trafficking and sexual abuse survivors as they are brought into safe community with opportunities to be mentored and empowered to embrace new identities in Christ.

#### *The Geneva Initiative (International ministry outreach)*

The Geneva Initiative mobilizes churches to receive refugees and international families in healthy and loving ways, inviting them into a supportive community and connecting them with opportunities in their new home country.



# Get Involved

One of the most powerful ways to show the most vulnerable the love of Christ is by taking steps toward them. By helping churches be the hands and feet of Jesus, Send Relief supports and provides opportunities for those who desire to respond directly to these needs in lasting, meaningful ways while sharing the hope of the gospel.

## Give

Your gift provides critical, immediate help to families and communities that need it most. Give today to provide practical care and share the love of Jesus.

[Click here or scan the QR code to give](#)



## Contact

John Ames  
Boston Ministry Center Director  
[SendMe@sendrelief.org](mailto:SendMe@sendrelief.org)

## Serve

Participate in various compassion opportunities by taking a mission trip and vision tour to a ministry center around North America. Mission trips can include apartment outreach, food pantry ministry, after-school programs, sports ministry, canvassing, prayer walking, homeless ministry, physical labor, serving at-risk families and university campus ministry. The trip also includes aspects of training and equipping so that you can learn how to connect and serve the international and refugee communities in their cities.

[Click here to sign up](#)







4200 North Point Parkway  
Alpharetta, GA 30022  
1-833-SENDHOPE  
SendRelief.org